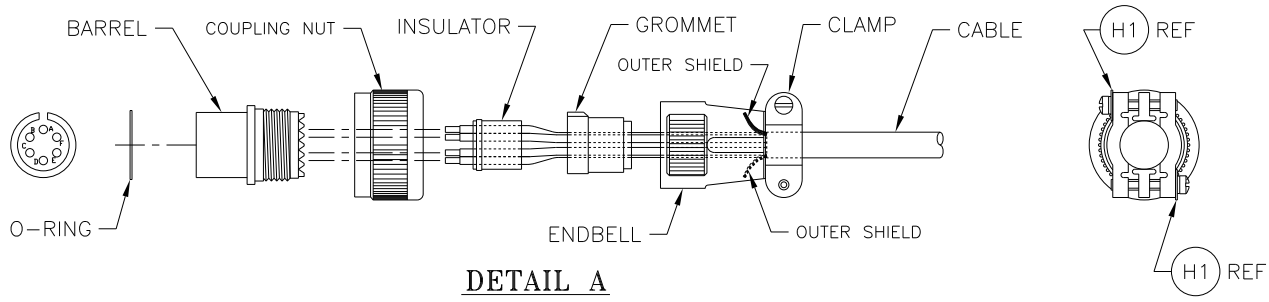
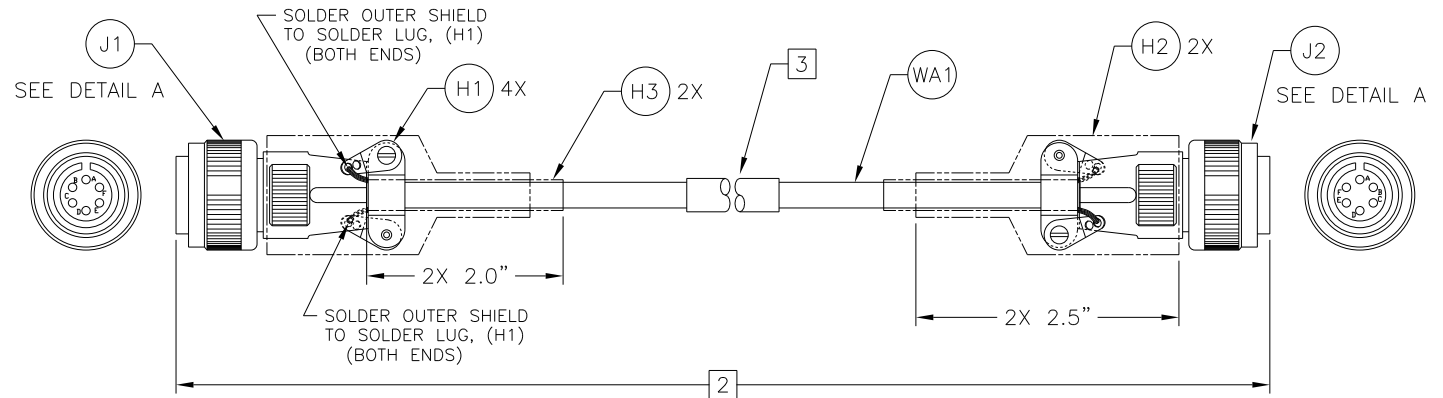


REVISIONS			
REV.	DESCRIPTION	DATE	APPROVED
A	RELEASE PER ECO# 11875	01/04/07	J. HECHT



DETAIL A

WIRING SCHEDULE			
FROM J1	TO J2	WA1	COLOR
PIN-A	PIN-A	WIRE 1	BLACK
PIN-B	PIN-B	WIRE 2	WHITE
PIN-C	PIN-C	WIRE 3	RED
PIN-D	PIN-D	WIRE 4	GREEN
PIN-E	PIN-E	WIRE 5	ORANGE
PIN-F	PIN-F	WIRE 6	BLUE



ITEM#	QTY	TERRASAT PART#	DESCRIPTION	MANUF. PART#
H3	4.0"	557-10662-0004	SHRINK TUBING W/ADHESIVE LINER, 4:1 RATIO, 0.75" BLK	DABURN, DAFLEX SM278
H2	5.0"	557-10662-0003	SHRINK TUBING W/ADHESIVE LINER, 4:1 RATIO, 1.25" BLK	DABURN, DAFLEX SM278
WA1	[2]	555-10773-0001	CABLE, MULTI-COND, SHIELDED, 16AWG, 6COND	BELDEN, 83706
H1	4	538-10468-0003	LUG, SOLDER, #6-32, STAR INSERT, STRAIGHT	CONCORD, 707-1206
J2	1	533-20772-0001	CONN, CIRC, STRAIGHT PLUG, THREADED, 14S, 6P	AMPH, ACS06E14S-6P(553)
J1	1	533-20772-0002	CONN, CIRC, STRAIGHT PLUG, THREADED, 14S, 6S.	AMPH, ACS06E14S-6S(553)

PARTS LIST

MATERIAL	SEE NOTES	UNLESS OTHERWISE SPECIFIED ALL DIMENSIONS ARE IN INCHES		TERRASAT COMMUNICATIONS, INC.		
FINISH	SEE NOTES	TOLERANCES ARE: XX ±.01, XXX ±.005, SURFACE FINISH ANGLES				
THIS DOCUMENT CONTAINS INFORMATION PROPRIETARY TO TERRASAT COMMUNICATIONS INC. WHICH IS EITHER COPYRIGHTED OR PATENT APPLIED FOR AND/OR PROTECTED BY TRADE SECRET LAWS. THIS DOCUMENT, OR ANY PARTS THEREOF, MAY NOT BE USED, DISCLOSED OR REPRODUCED IN ANY FORM, BY ANY METHOD, OR FOR ANY PURPOSE WITHOUT THE EXPRESS WRITTEN PERMISSION OF TERRASAT COMMUNICATIONS INC.		DRAWN BY: S. LOW APPROVED BY: J. HECHT CHANGED BY: CHECKED BY:	DATE: 01/04/07 DATE: 01/04/07 DATE:	FABRICATION DRAWING, CABLE ASSY, IBUC TO PSUI, DC		
DD NOT SCALE DRAWING		SCALE: NONE	FILE: 201751A	SIZE: B	DR# FBD-20715-XXXX	REV A
				SHEET 1 OF 1		

- NOTES: (UNLESS OTHERWISE SPECIFIED)
- FOR ALL ITEMS, USE PART NUMBER INDICATED OR EQUIVALENT.
 - DASH NUMBER EQUALS CABLE LENGTH IN FEET.
 - IDENTIFY CABLE WITH TERRASAT COMMUNICATIONS INC. PART NUMBER AND CURRENT REVISION LEVEL PER MIL-STD-130.